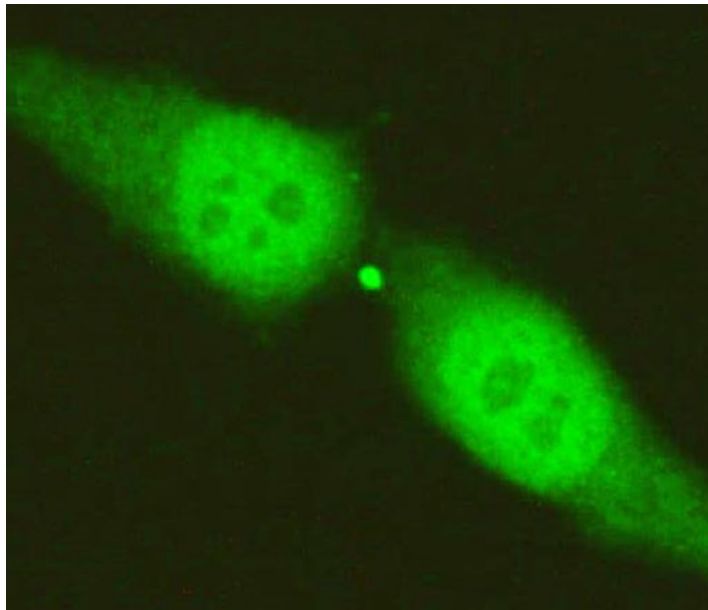




ANTICORPS ANTI-MIDBODY



René-Louis Humbel



Walter Flemming , 1891

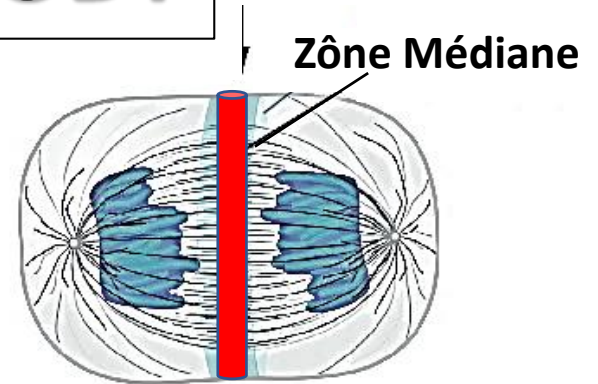


MITTELKÖRPER

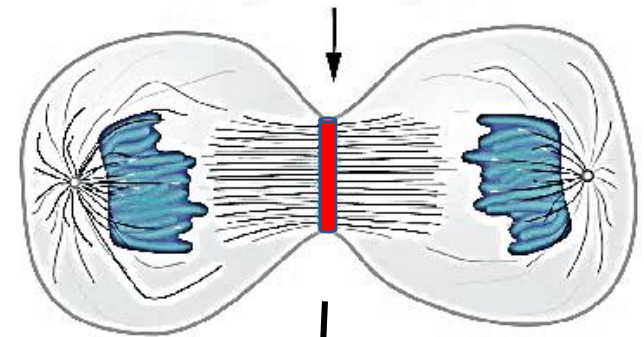
MIDBODY
STEM BODY
CORPS INTERMEDIAIRE
CORPS CENTRAL

FORMATION DU MIDBODY

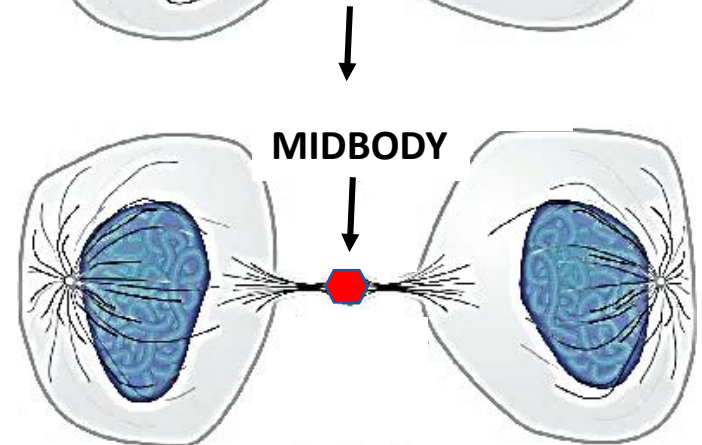
FUSEAU MITOTIQUE CENTRAL
ZONE MEDIANE / MIDZONE

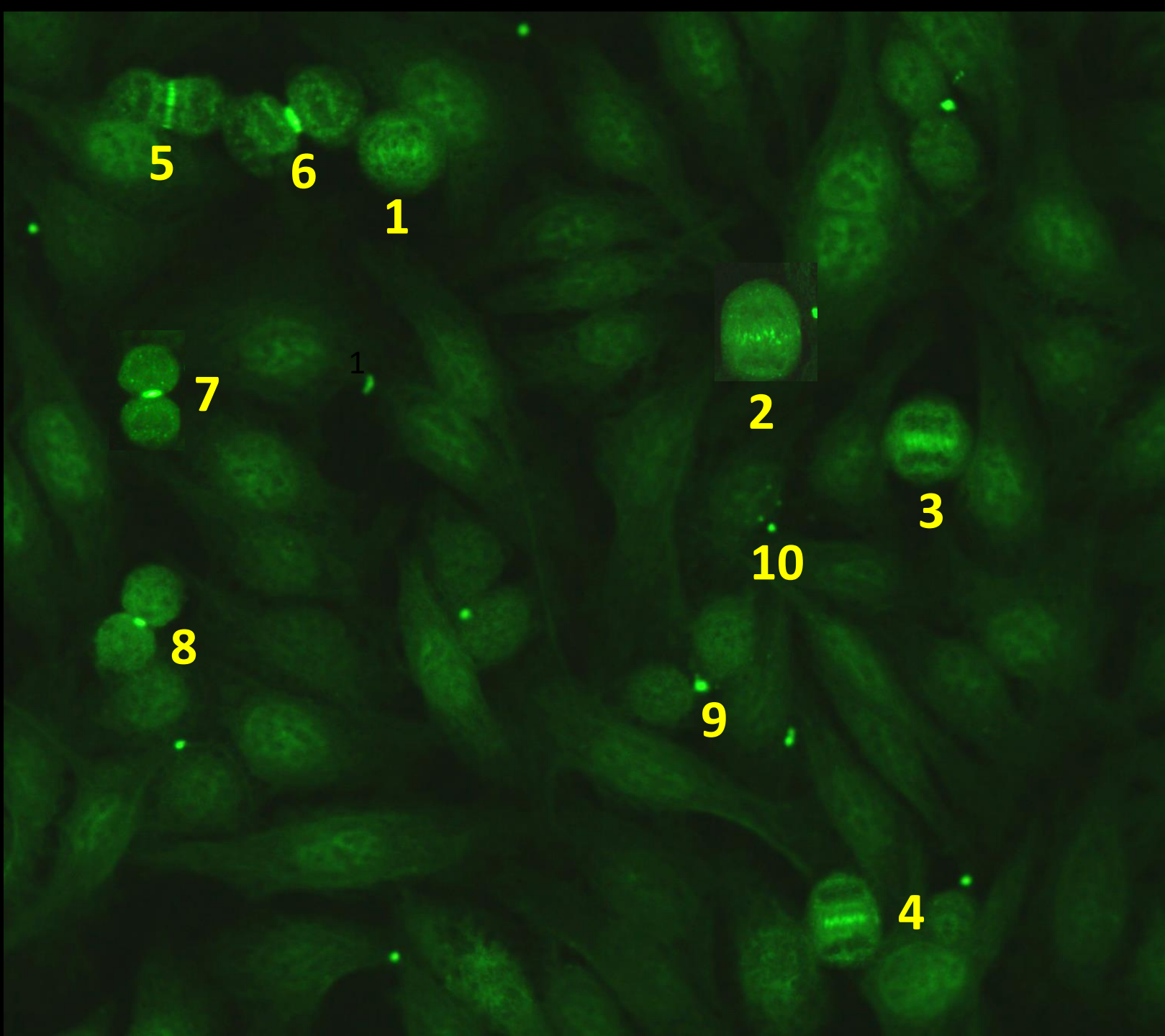


ANNEAU CONSTRICTEUR
SILLON DE CLIVAGE



PONT INTERCELLULAIRE
MIDBODY / CORPS MEDIAN





5

6

1

7

1

2

3

10

8

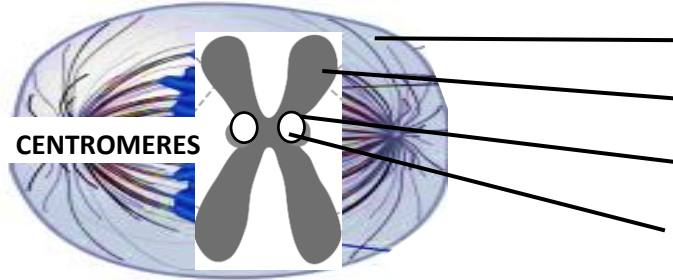
9

4

FORMATION DU MIDBODY

PROPHASE / METAPHASE

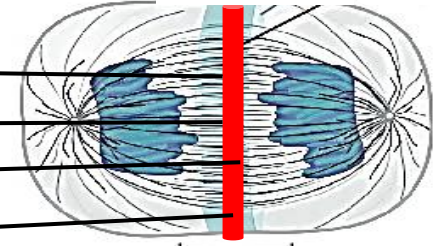
CHROMOSOME MITOTIQUE



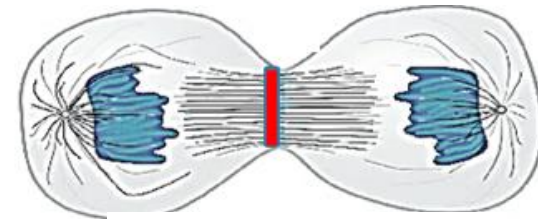
MKLP1
KIF4
CENP E
CPC

ANAPHASE

FUSEAU MITOTIQUE CENTRAL

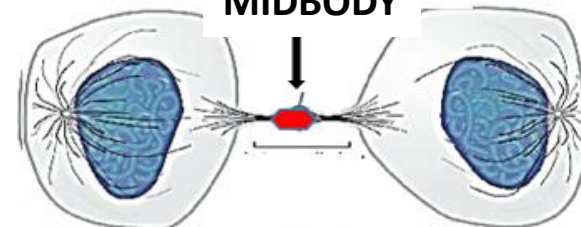


TELOPHASE



ANNEAU CONTRACTILE

MIDBODY



PONT INTERCELLULAIRE

ANTI- MKLP1 (Mitotic Kinesin Like Protein 1)
ANTI-KIF4 (Kinesin Family 4)
ANTI-CENP E (Centromeric Protein E)
Outer Kinetochores
CPC (Chromosomal Passenger Complex)
(Aurorakinase B, INCENP, Boréaline, TD60, Survivine)
Centromeric Inner Kinetochores
MSA2

ANTICORPS ANTI-MIDBODY

ANTI-MKLP1

ANTI-KIF4

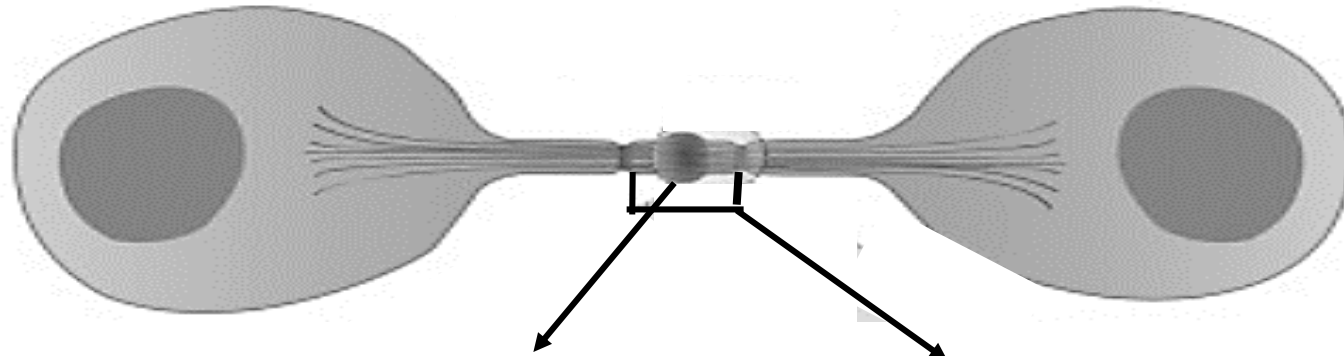
ANTI-CENTROMERE E

**ANTI-MSA2 - ANTI-CPC (Chromosomal Passenger
Complex)**

ANTICORPS MARQUANT LE MIDBODY

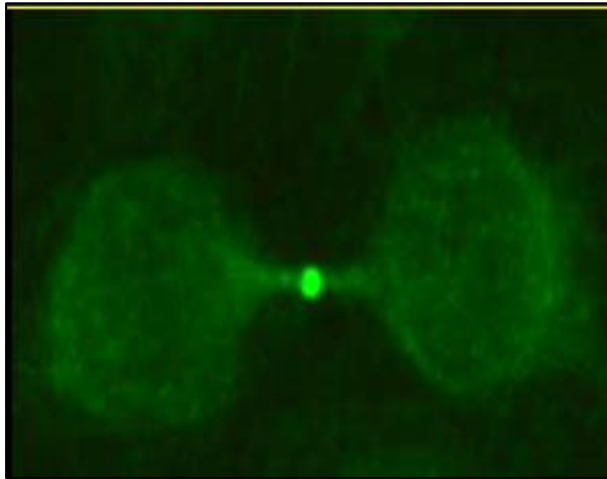
	<u>INTERPHASE</u>	<u>PROPHASE</u>	<u>METAPHASE</u>	<u>ANAPHASE</u>	<u>TELOPHASE</u>
ANTI-MKLP1	-	-	-	++	++
ANTI-KIF4	-	+	++	++	++
ANTI-CENP E	-	+	++	++	++
ANTI-MSA2	+(G2)	++	++	++	++

MIDBODY

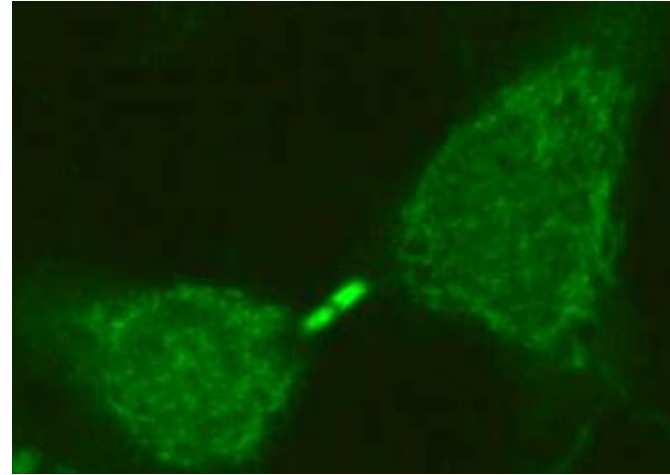


BULBE CENTRAL

ZONES FLANQUANTES

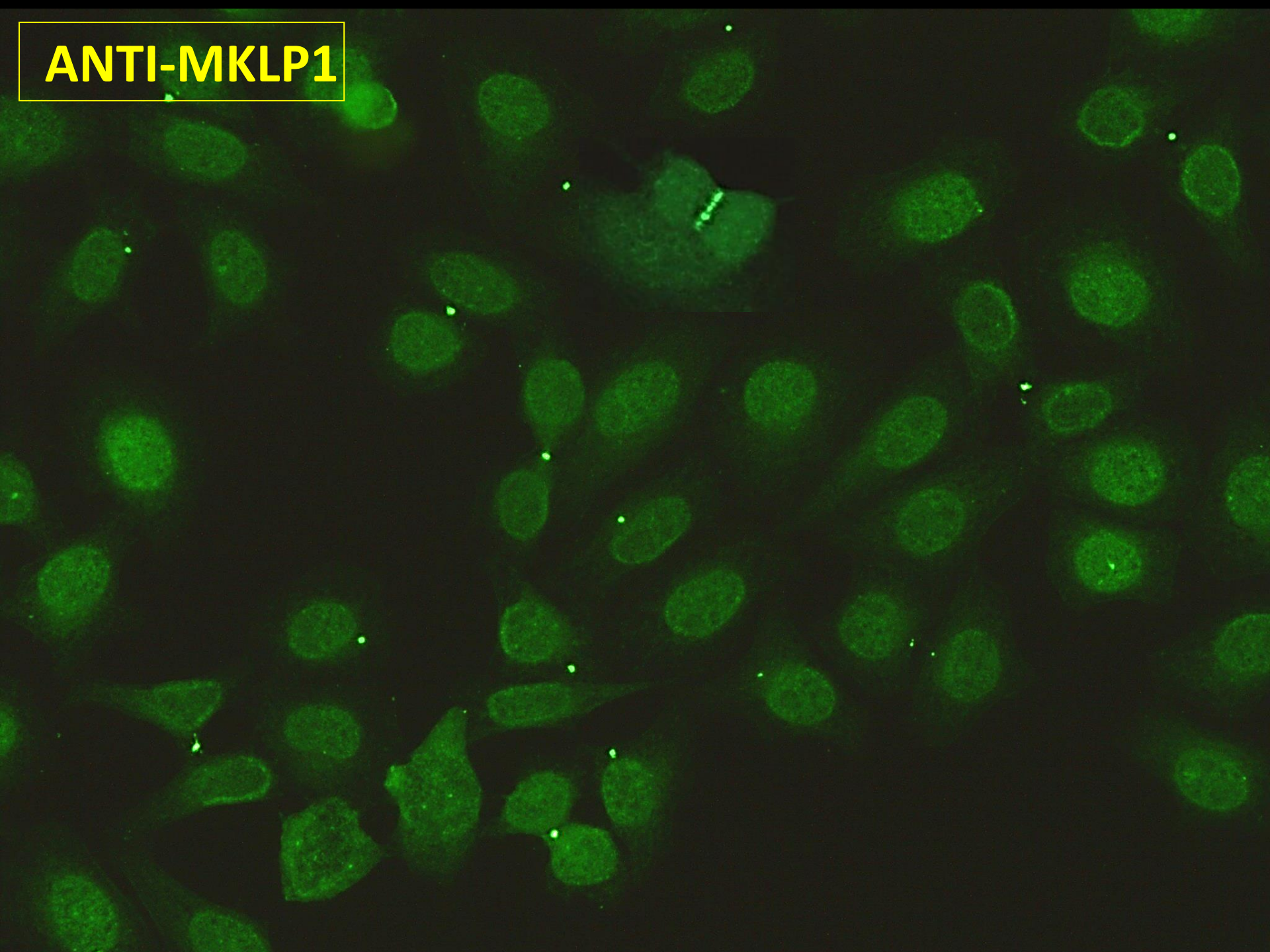


ANTI-KIF4
ANTI-MKLP1

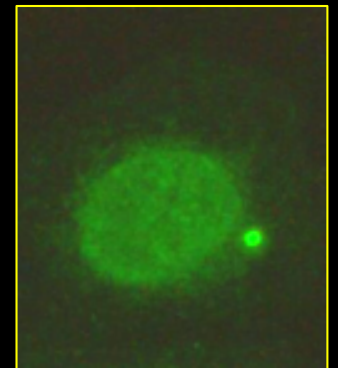
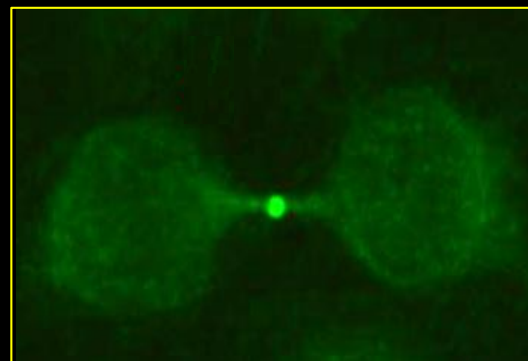
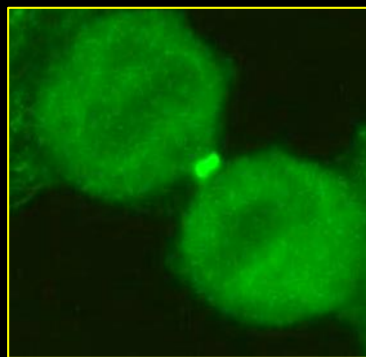
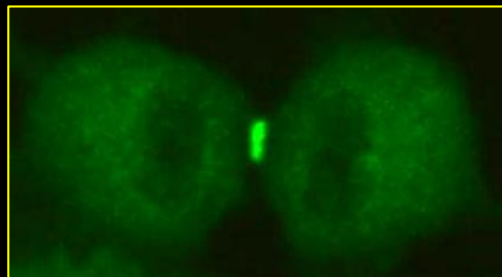
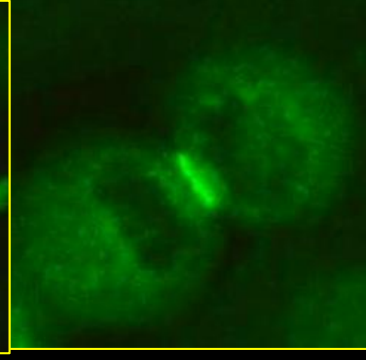
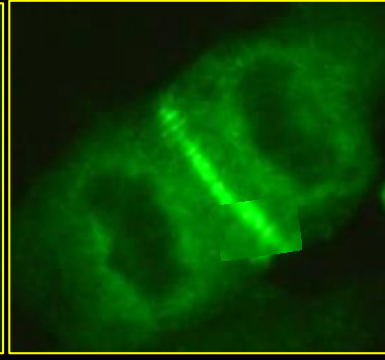
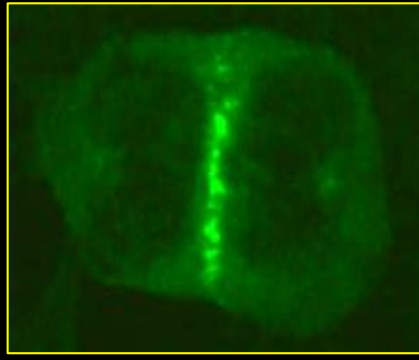
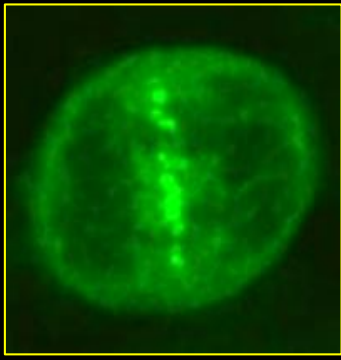
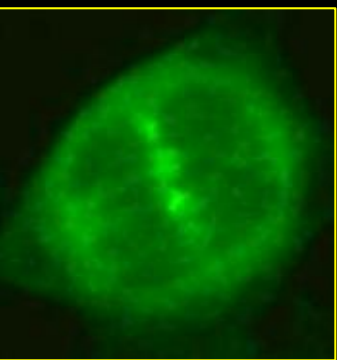
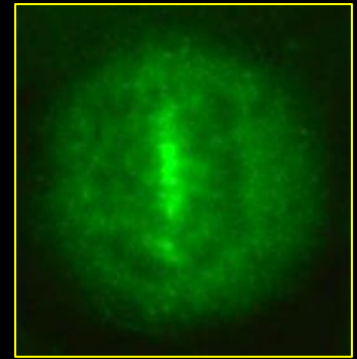
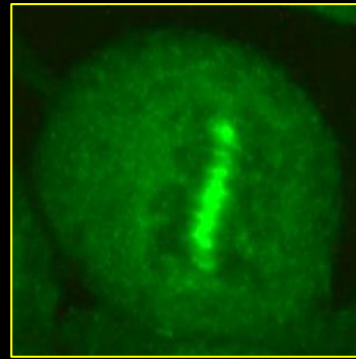
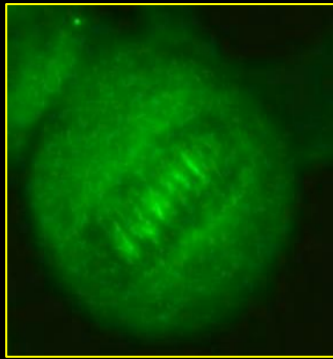
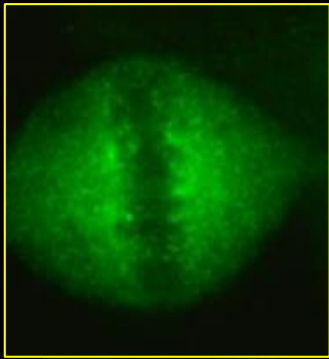
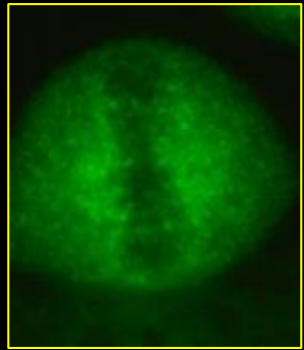


ANTI-CENP E
ANTI-MSA2

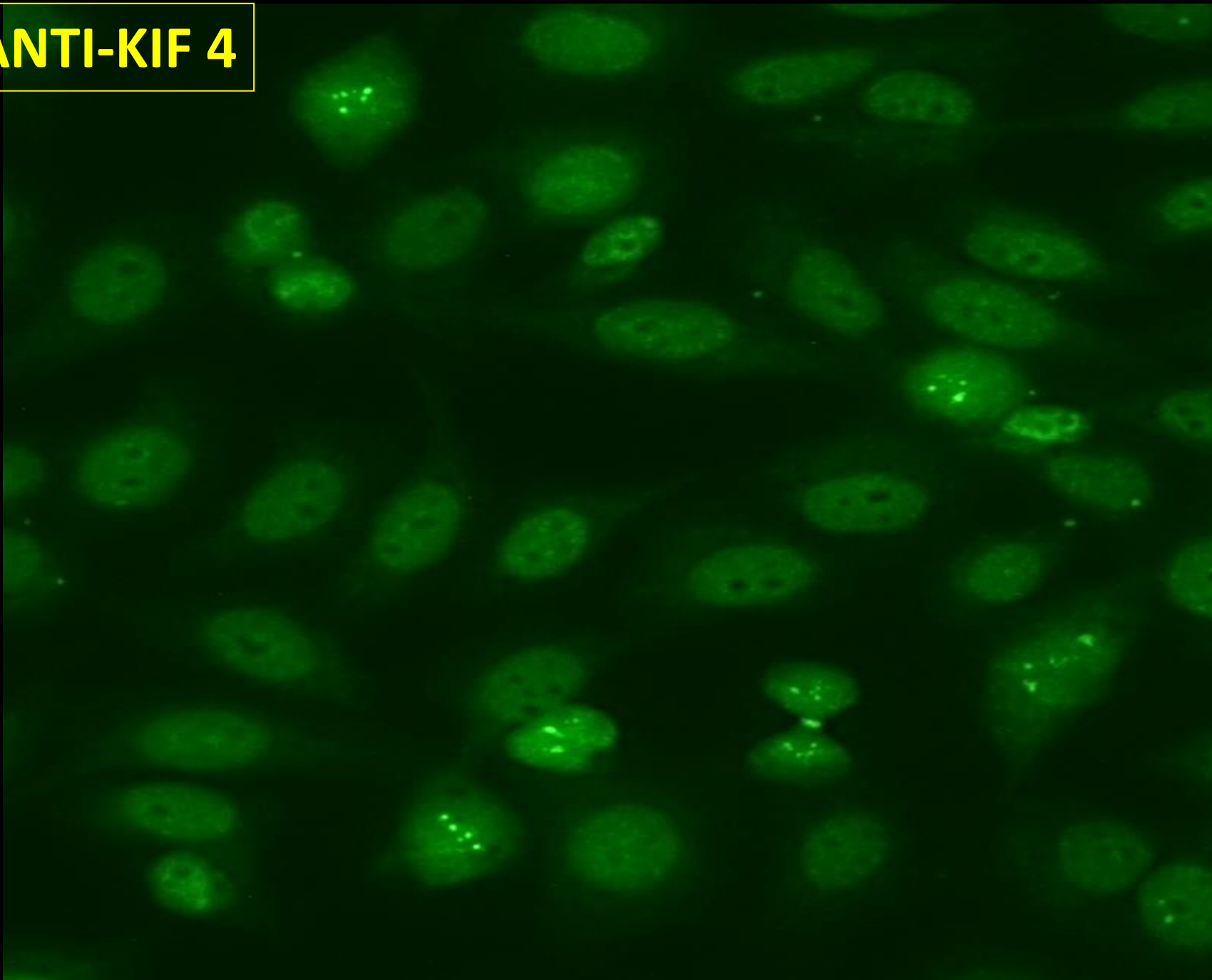
ANTI-MKLP1



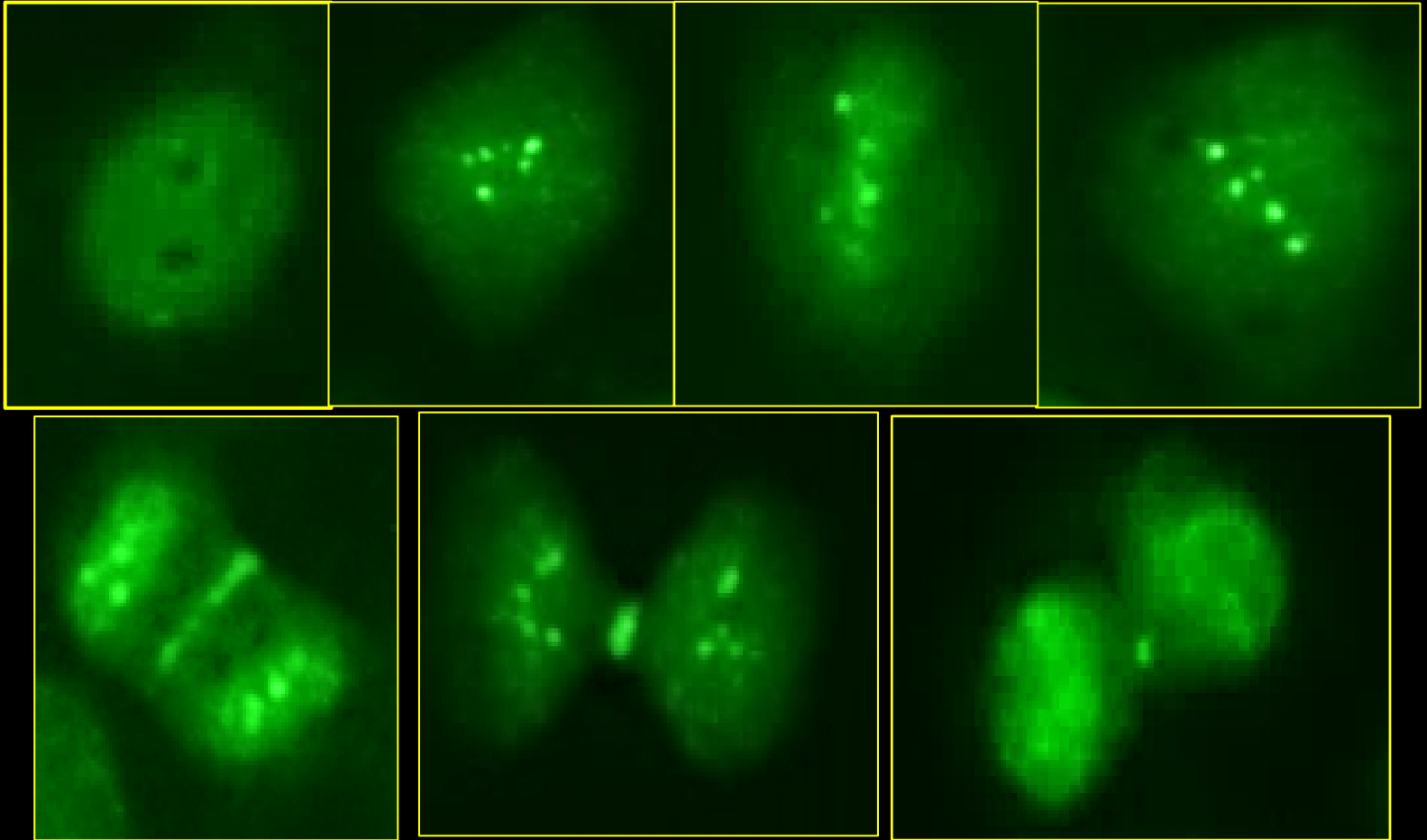
ANTI-MKLP1



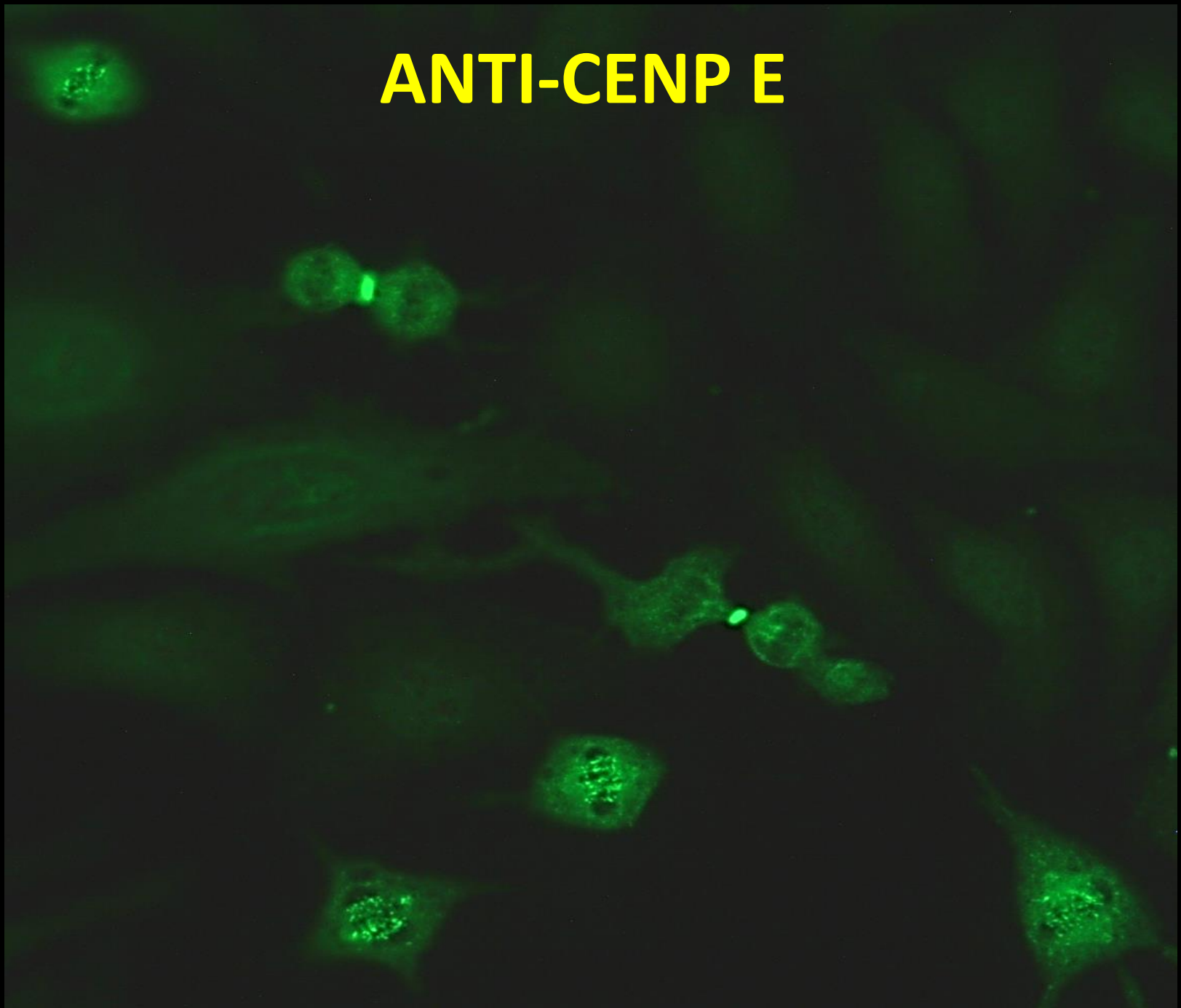
ANTI-KIF 4



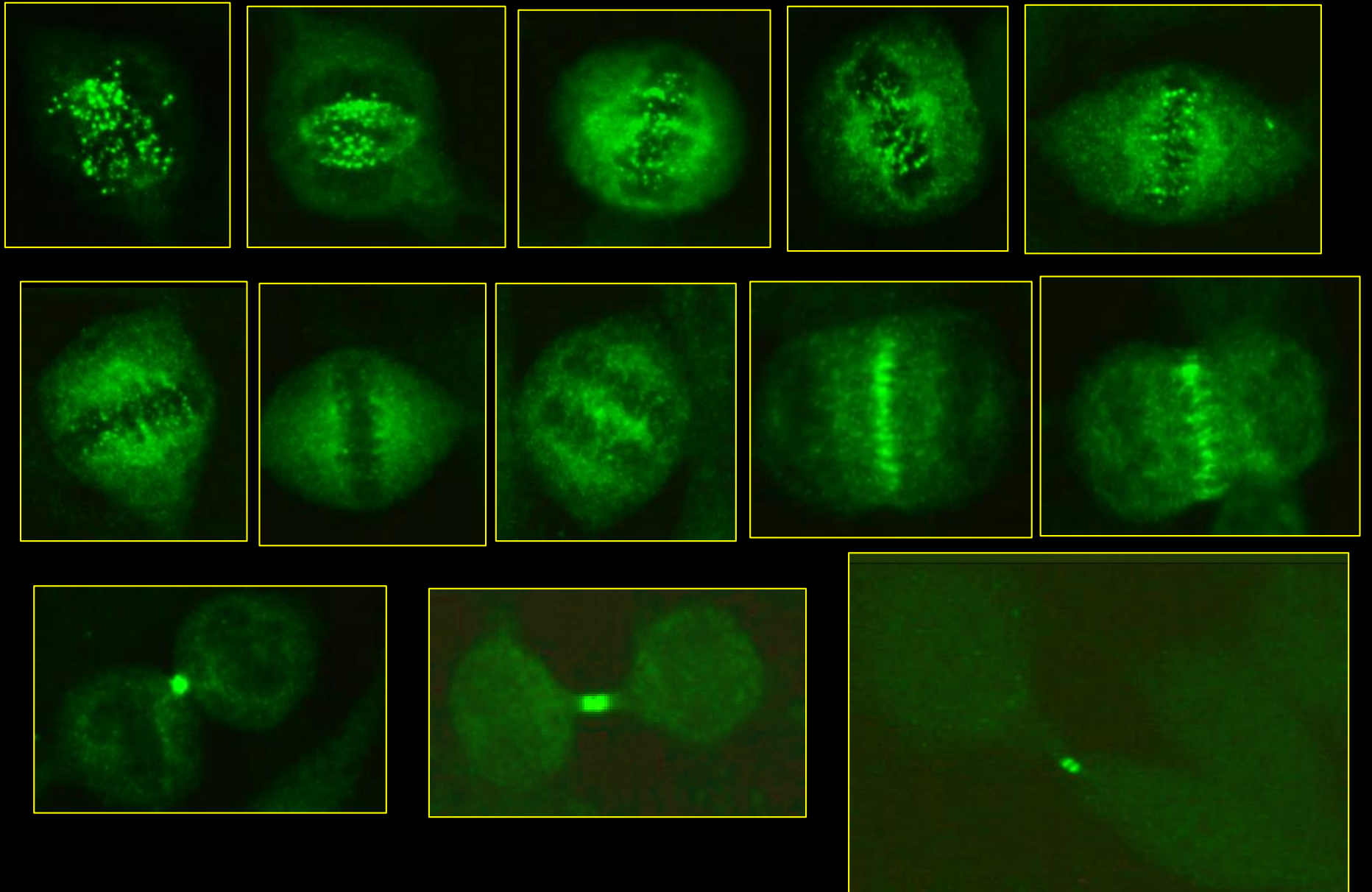
ANTI- KIF4



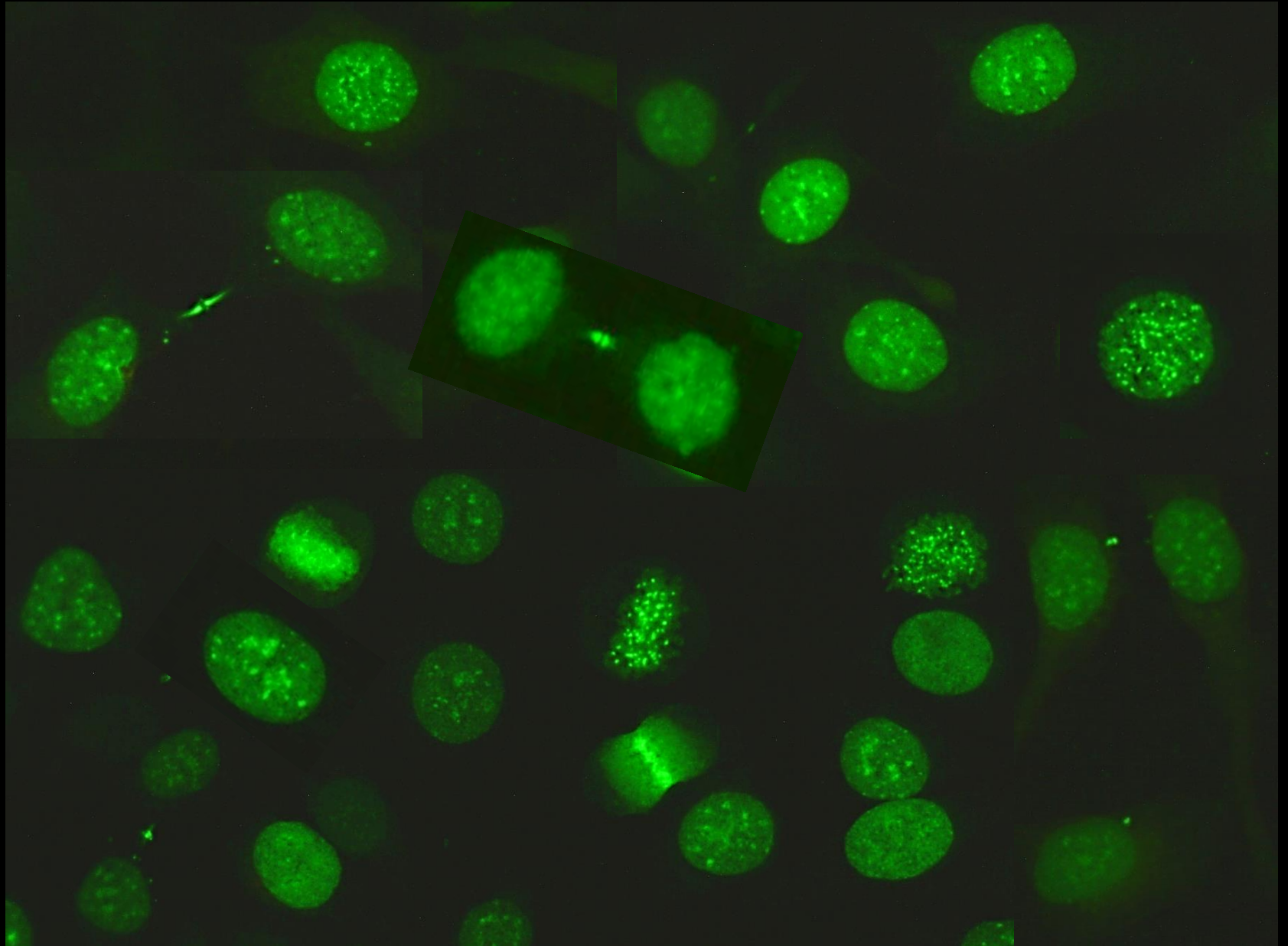
ANTI-CENP E



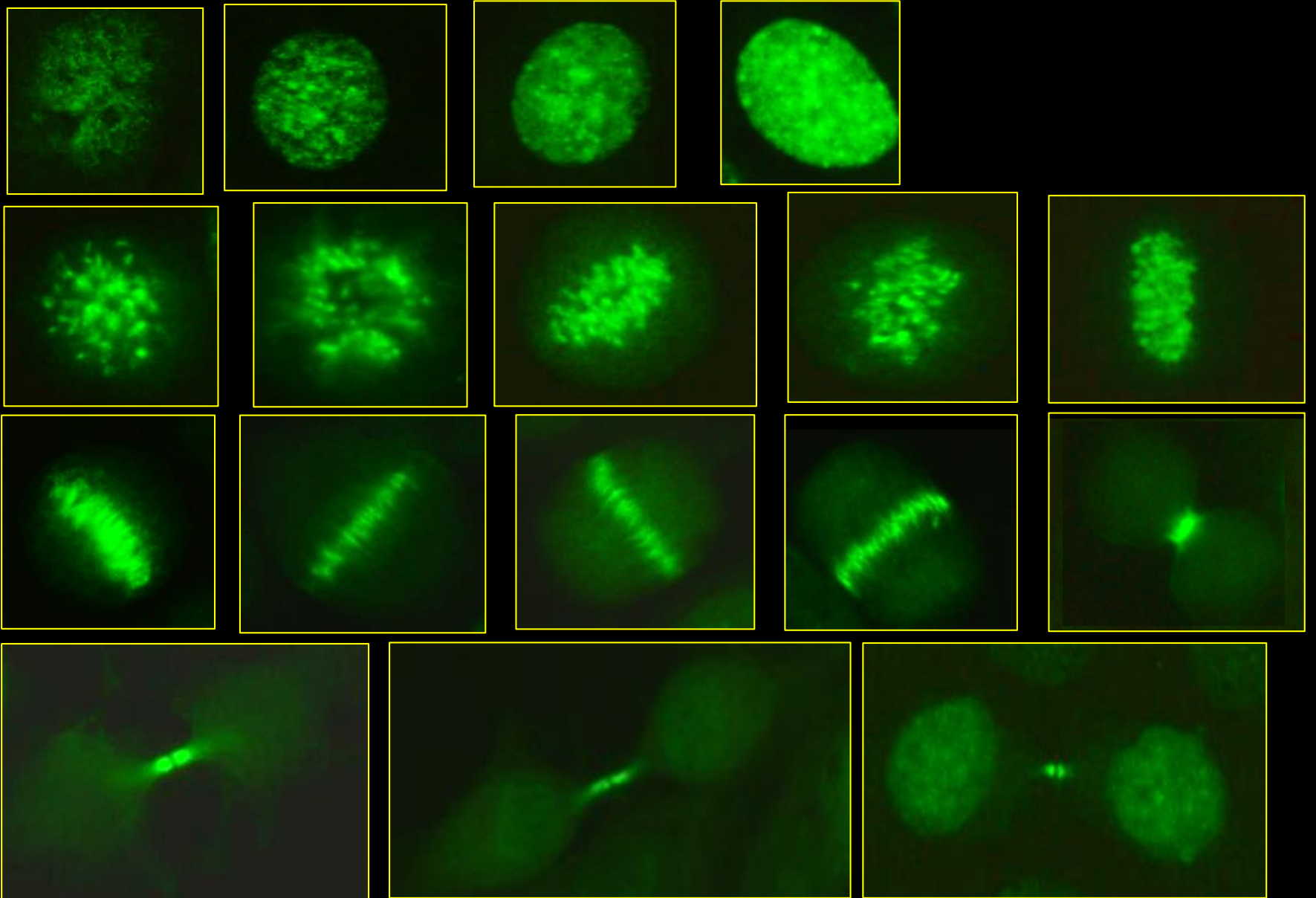
ANTI-CENP E



ANTI- MSA2

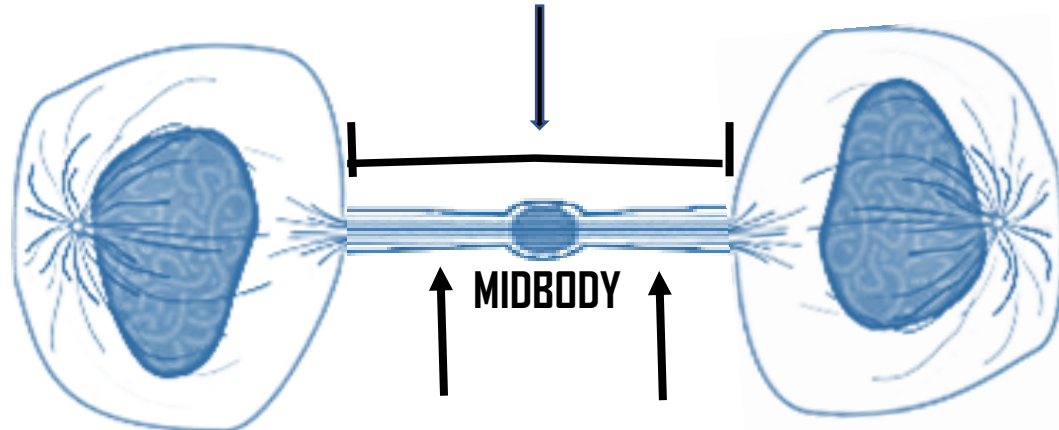


ANTI-MSA2

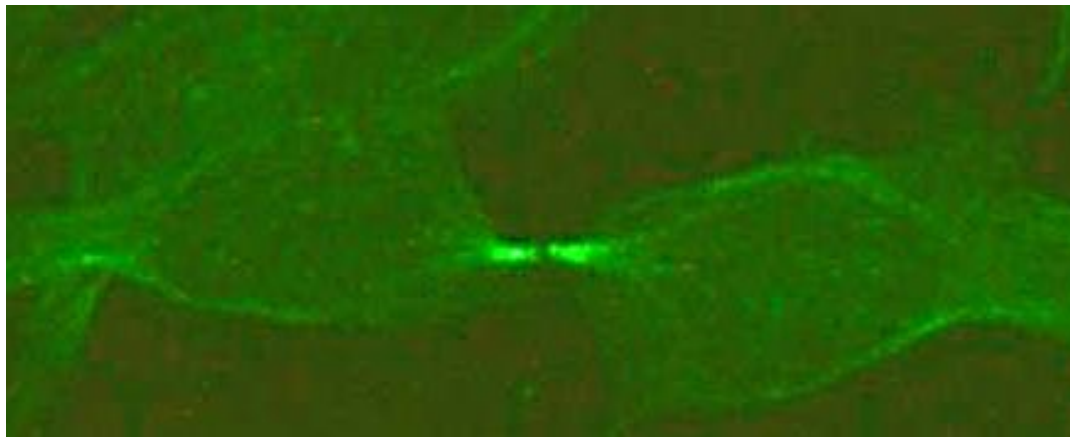


ANTICORPS ANTI-TUBULINE

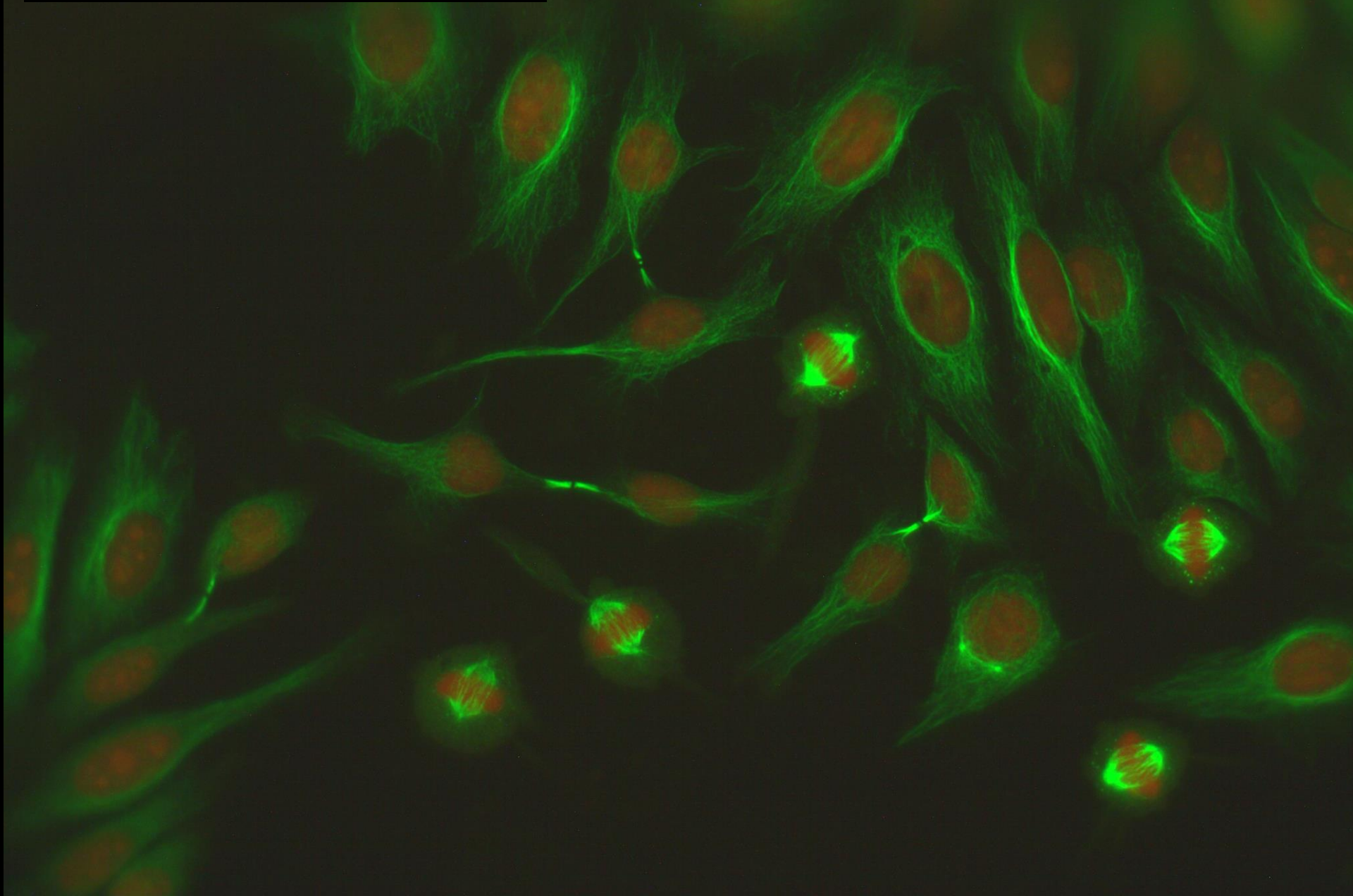
PONT INTERCELLULAIRE



FAISCEAUX DE MICROTUBULINE



ANTI-TUBULINE



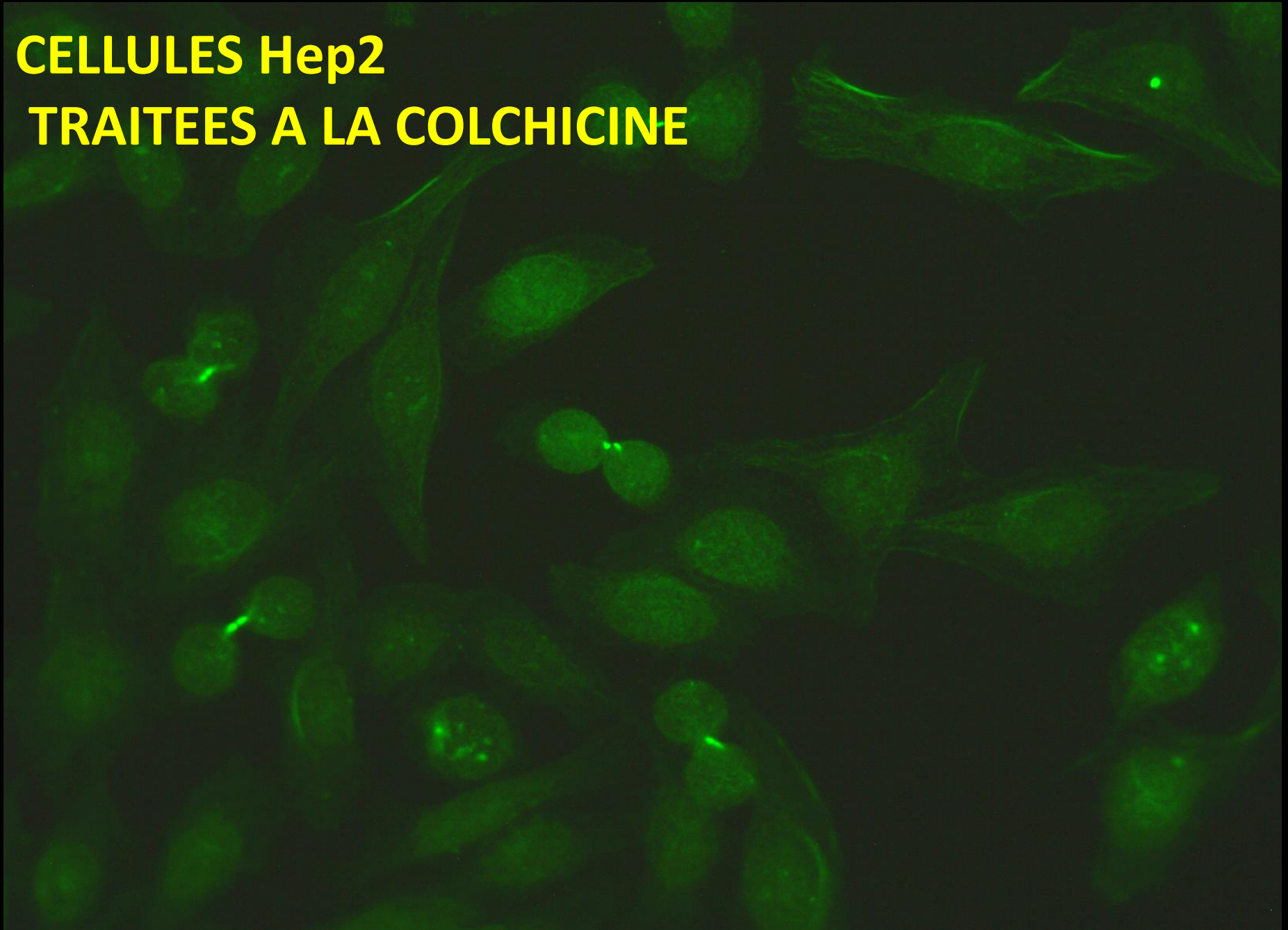
CELLULES Hep2

NON TRAITÉES A LA COLCHICINE

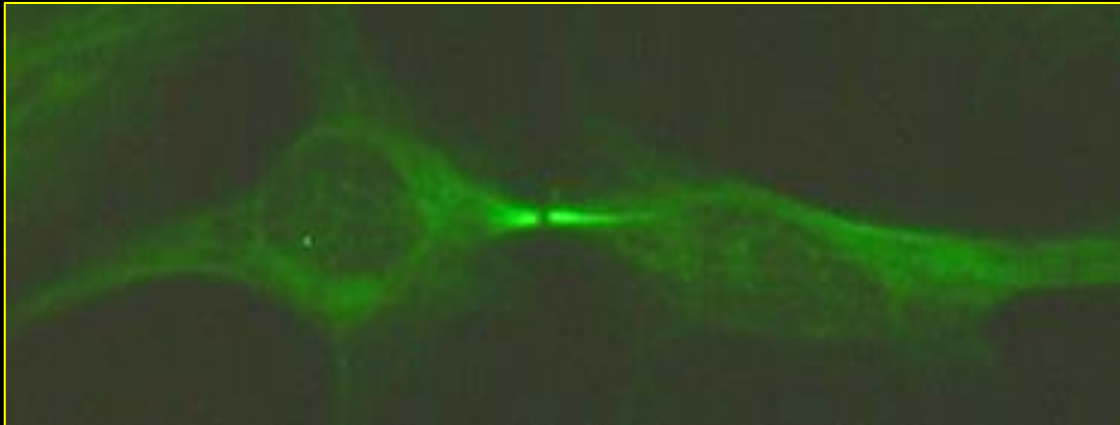
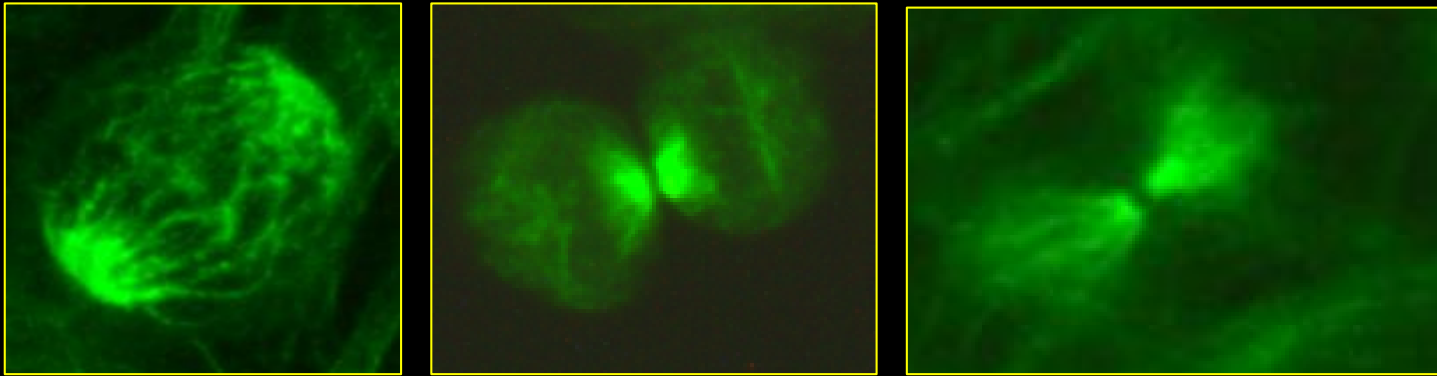
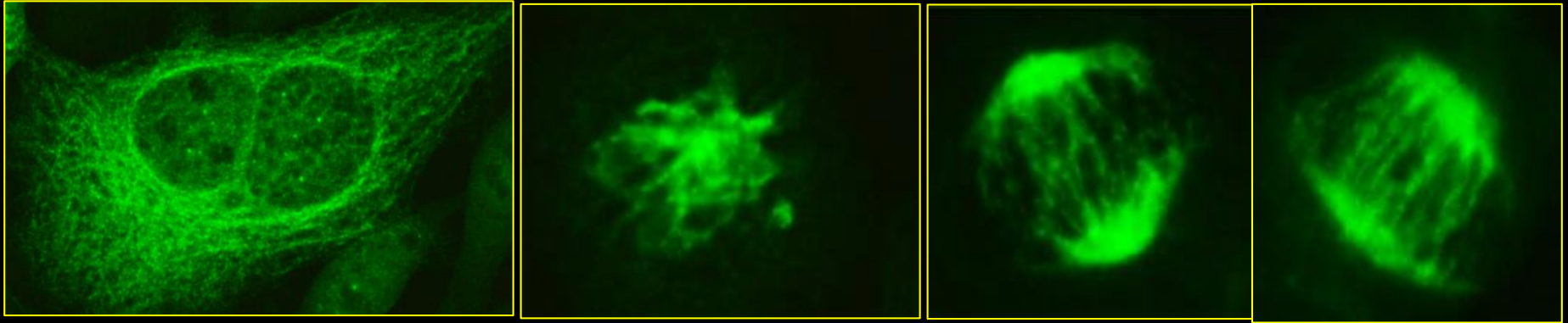


CELLULES Hep2

TRAITEES A LA COLCHICINE

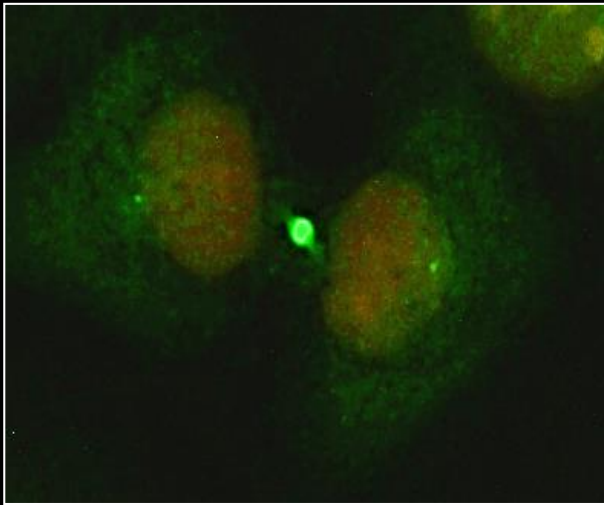


ANTI-TUBULINE

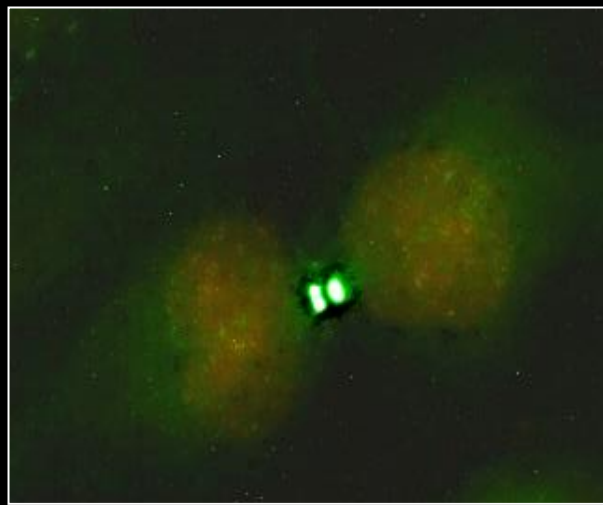


PONT INTERCELLULAIRE

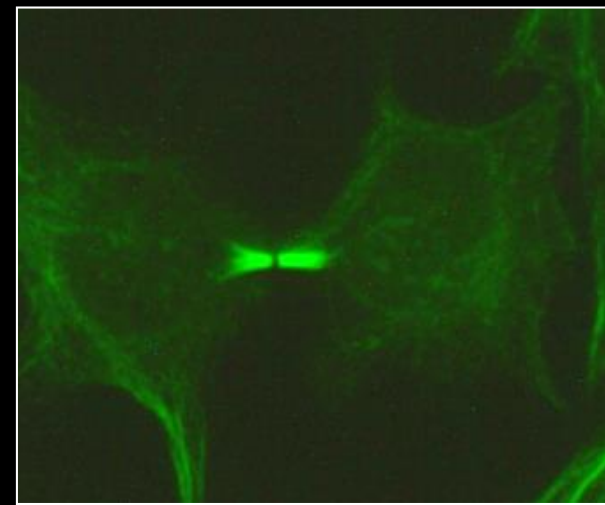
MIDBODY



MKLP1
KIF4



CENP E
MSA2



TUBULINE